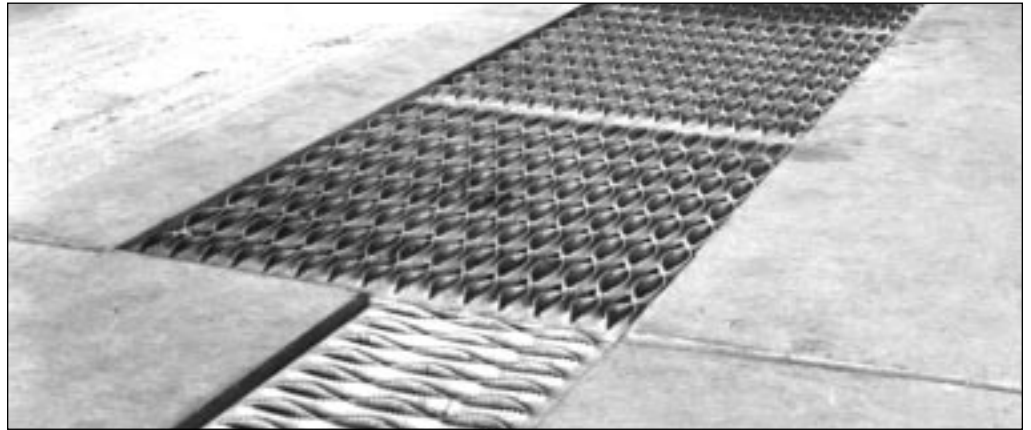


HEAVY DUTY GRIP STRUT-Strut Loading				
WIDTHS	GAUGE	U	C _s	
36"	10 ga. steel	343	515	
Plank	9 ga. steel	391	586	
Serrated	Deflection	.20"	.16"	
27-3/4"	10 ga. steel	682	788	
Plank	9 ga. steel	767	887	
Serrated	Deflection	.14"	.11"	
23-1/4"	10 ga. steel	971	941	
Plank	9 ga. steel	1093	1059	
Serrated	Deflection	.10"	.08"	
13-3/4"	10 ga. steel	2354	1348	
Plank	9 ga. steel	2678	1534	
Serrated	Deflection	.03"	.02"	
9-1/4"	10 ga. steel	5201	2004	
Plank	9 ga. steel	5917	2281	
Serrated	Deflection	.01"	.01"	
36"	10 ga. steel	343	515	
Walkway	9 ga. steel	391	586	
Serrated	Deflection	.20"	.16"	
30"	10 ga. steel	494	618	
Walkway	9 ga. steel	563	703	
Serrated	Deflection	.14"	.11"	
24"	10 ga. steel	912	912	
Walkway	9 ga. steel	1026	1026	
Serrated	Deflection	.11"	.11"	

Loading Information

Heavy Duty GRIP STRUT®



Heavy duty planks withstand heavy duty loads.

Steel Heavy Duty GRIP STRUT ENGINEERING DATA										BOTH SIDE CHANNELS ONLY						
WIDTH STYLE		2-DIAMOND PLANK			3-DIAMOND PLANK			8-DIAMOND PLANK			6-DIAMOND WALKWAY			8-DIAMOND WALKWAY		
Ga.	Height /Depth (in.)	I (in. ⁴)	S (in. ³)	EI (lb-in. ²)	I (in. ⁴)	S (in. ³)	EI (lb-in. ²)	I (in. ⁴)	S (in. ³)	EI (lb-in. ²)	I (in. ⁴)	S (in. ³)	EI (lb-in. ²)	I (in. ⁴)	S (in. ³)	EI (lb-in. ²)
10	2"	0.40	0.32	11.5x10 ⁶	0.41	0.33	11.8x10 ⁶	0.40	0.32	11.8x10 ⁶						
	2-1/2"	0.71	0.47	20.7x10 ⁶	0.73	0.49	21.2x10 ⁶	0.71	0.47	21.2x10 ⁶						
	3"	1.15	0.65	33.4x10 ⁶	1.18	0.67	34.1x10 ⁶	1.15	0.65	34.1x10 ⁶						
	4"	2.46	1.07	71.5x10 ⁶	2.50	1.10	72.8x10 ⁶	2.46	1.07	72.8x10 ⁶						
9	5"										6.84	2.52	198.5x10 ⁶	4.47	1.59	129.6x10 ⁶
	2"	0.42	0.34	12.1x10 ⁶	0.43	0.35	12.5x10 ⁶	0.42	0.34	12.1x10 ⁶						
	2-1/2"	0.76	0.50	22.0x10 ⁶	0.78	0.52	22.5x10 ⁶	0.76	0.50	22.0x10 ⁶						
	3"	1.23	0.69	35.7x10 ⁶	1.23	0.71	35.6x10 ⁶	1.23	0.69	35.7x10 ⁶						
	4"	2.65	1.15	77.0x10 ⁶	2.70	1.18	78.4x10 ⁶	2.65	1.15	77.0x10 ⁶						
	5"										7.46	2.75	216.3x10 ⁶	7.46	1.72	140.5x10 ⁶

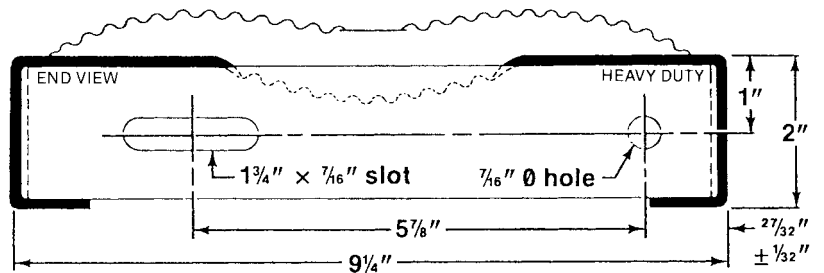
FREE
Master Catalog
Ask Us!

Stair Treads

HEAVY DUTY

MATERIAL: Steel—10 gauge, galvanized
HEIGHT: 2"
WIDTH: 9-1/4"
LENGTH: 24", 30", 36", 48"

Nowhere is sole-gripping design more critical than on stairs, where feet are more prone to slip, often with severe consequences. Heavy Duty GRIP STRUT® Treads provide the sole gripping qualities for extra safety two ways: multi-directional scraping action of tiny-toothed surfaces keeps shoes clean; open design rids surface of debris. Treads are available in standard nosing style only. They are ideal for new construction, easily attached to stringers for rehabilitation of existing stairs.



Heavy Duty Stair Tread				Load Table				
Material	Height	#/LF	Catalog#	Load Type	Clear Span			
					2'0"	2'6"	3'0"	4'0"
Steel-10 ga.	2"	7.4	HT-22010	U	2412	1544	1026	629
				C	1860	1487	1240	929

Maximum allowable tread loads. See "Load Information" page 4 for complete explanation.

Accessories

Hold-Down Clip



Stainless steel; use with 3/8" square-shank carriage bolts, nuts and washers obtained locally.

Walkway Splice Plate

9 gauge mill-galvanized steel, prepunched and supplied with 1/2" hex bolts, nuts and washers. Torque to 40 ft lbs.

