

# Introducing McNICHOLS . . .

## EXTREN® Fiberglass Structural Shapes and Plate

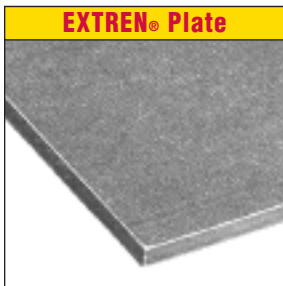


- Very Lightweight—about 70% the Weight of Aluminum
- Corrosion Resistant
- High Strength
- Low in Conductivity—Thermally and Electrically
- Easy Fabrication
- Impact Resistant
- Dimensional Stability
- Low Maintenance
- Custom Colors Available
- Nonmagnetic—Electromagnetic Transparency

**CONSTRUCTION/ MATERIAL:** Combination of fiberglass reinforcements and thermosetting polyester, vinyl ester, or thermal cure resin system. *Additional resin information is available.*

**RESINS/COLORS:** 525 SPF - Gray; Fire retardant isophthalic polyester resin system with UV inhibitor unless otherwise noted.

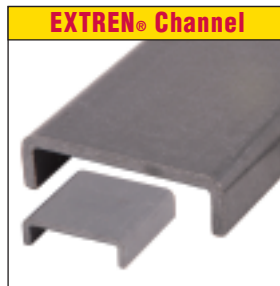
*Loading can vary significantly from steel. Information is available.*



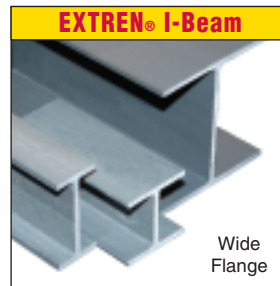
**RESIN:** 525 SPF  
**COLOR:** Gray  
**SIZE:** 4' x 8'  
**SURFACE:** No grit



**RESIN:** 525 SPF  
**COLOR:** Gray  
**LENGTH:** 20' long



**RESIN:** 525 SPF  
**COLOR:** Gray  
**LENGTH:** 20' long



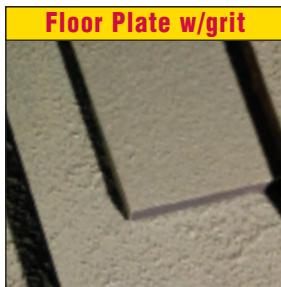
**RESIN:** 525 SPF  
**COLOR:** Gray  
**LENGTH:** 20' long



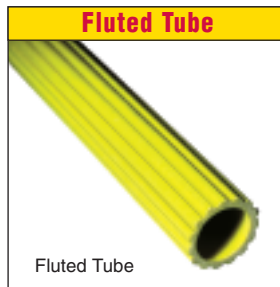
**RESIN:** 525 SPF  
**COLOR:** Gray  
**LENGTH:** 20' long



**RESIN:** 525 SPF  
**COLOR:** Gray  
**LENGTH:** 20' long



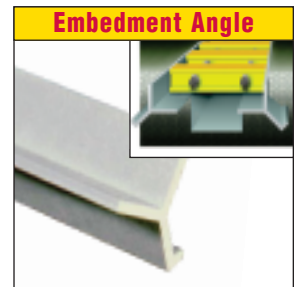
**RESIN:** SPF  
**COLOR:** Gray  
**SIZE:** 4' x 8'  
**SURFACE:** Grit



**RESIN:** Vinyl Ester  
**COLOR:** Yellow  
**LENGTH:** 20' long  
*Non-fire retardant*



**RESIN:** Thermal Cure  
**COLOR:** Lt. Gray/Green  
**LENGTH:** 20' long  
*Non-fire retardant*



**RESIN:** SVF  
**COLOR:** Gray  
**LENGTH:** 20' long  
*Fire retardant*

*More information on reverse side.*

ISO 9001:2000 Certified

1-800-237-3820

Worldwide Service



# McNICHOLS CO.

www.mcnichols.com

e-mail: sales@mcnichols.com



## INDUSTRIES SERVED

Transportation

Building Construction

Electrical Utility

Chemical Processing

Cellular Communications

Food and Beverage

Pulp and Paper

Oil and Gas

Water/Wastewater

Air Pollution Control

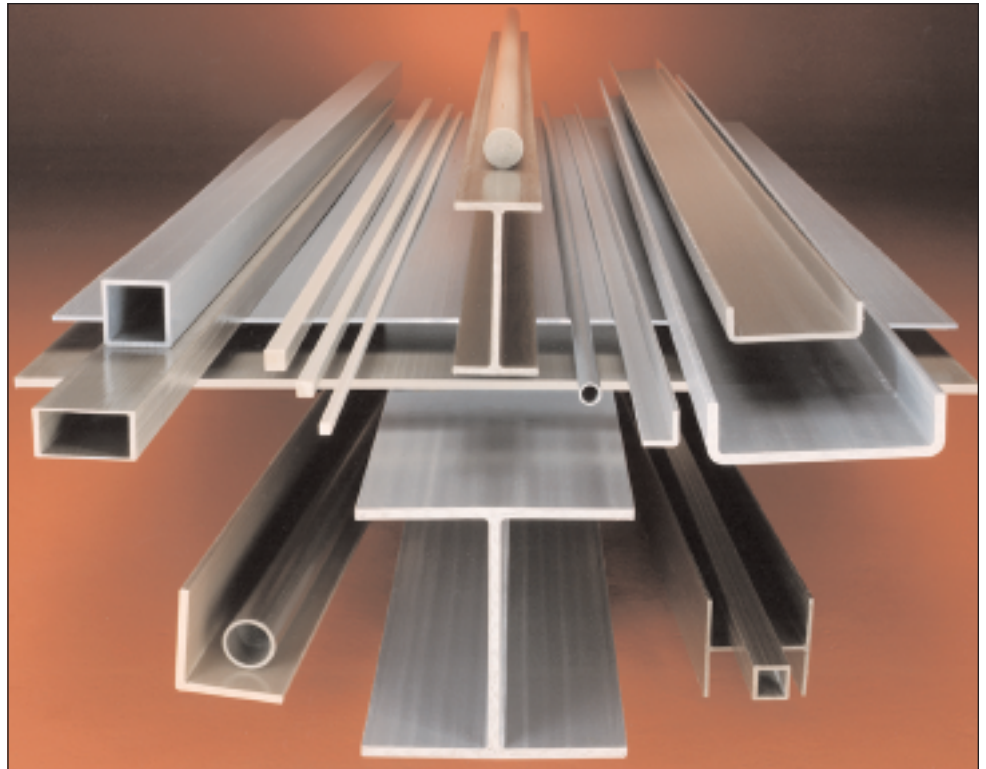
Aeronautical Defense

Plating

Agricultural

Appliance/Equipment

Consumer/Recreation



## Product Availability List

### EXTREN® Equal Leg Angles

1" x 1/8"  
1-1/4" x 3/16"  
1-1/2" x 3/16"  
1-1/2" x 1/8"  
1-1/2" x 1/4"  
2" x 3/16"  
2" x 1/4"  
3" x 1/4"  
3" x 3/8"  
4" x 1/4"  
4" x 3/8"  
4" x 1/2"  
6" x 1/2"  
1-1/4" x 1/8"  
2" x 1/8"  
5" x 1/2"  
6" x 1/4"  
6" x 3/8"

### EXTREN® Channels

2" x 9/16" x 1/8"  
3" x 7/8" x 1/4"  
4" x 1-3/8" x 3/16"  
4" x 1-1/8" x 1/4"  
5" x 1-3/8" x 1/4"  
6" x 1-5/8" x 1/4"  
6" x 1-11/16" x 3/8"  
8" x 2-3/16" x 1/4"  
8" x 2-3/16" x 3/8"  
10" x 2-3/4" x 1/2" (24' lg.)

### EXTREN® Channels

1-1/2" x 1" x 3/16"  
1-1/2" x 1-1/2" x 1/4"  
2" x 7/8" x 1/4"  
2-5/8" x 1/8" x 1-1/4" x 3/16"  
3" x 1" x 3/16"  
3-1/2" x 1-1/2" x 3/16"  
4" x 1-1/16" x 1/8"  
5-1/2" x 1-1/2" x 3/16"  
14" x 3-1/2" x 3/4"  
18" x 2-3/16" x 3/16"  
24" x 3" x .260"

### EXTREN® I-Beams

3" x 1-1/2" x 1/4"  
4" x 2" x 1/4"  
8" x 4" x 3/8"  
2" x 1" x 1/8"  
6" x 3" x 1/4"  
6" x 3" x 3/8"  
6" x 4" x 1/4"  
8" x 4" x 1/2"  
10" x 5" x 3/8"  
10" x 5" x 1/2"  
12" x 6" x 1/2"  
18" x 3/8" x 4-1/2" x 1/2"  
24" x 3/8" x 7-1/2" x 3/4"

### Embedment Angle

1" x 1-1/2"  
1-1/2" x 1-1/2"  
2" x 1-1/2"

### EXTREN® Wide Flange Beams

3" x 1/4"  
4" x 1/4"  
6" x 1/4"  
6" x 3/8"  
8" x 3/8"  
10" x 3/8" (32' long)  
2" x 1/8"  
8" x 1/2"  
10" x 1/2"  
12" x 1/2"

### EXTREN® Plate\*\*

1/8"  
3/16"  
1/4"  
3/8"  
1/2"  
3/4"  
5/8"  
1"

### Pultruded Plate

1/4"  
1/8"

### FIBREBOLT® Studs and Nuts

Stocked in 4' lengths  
Size: 3/8", 1/2", 5/8",  
3/4", 1"

### EXTREN® Round Tube

1" x 1/8"  
1-1/4" x 1/8"  
1-1/2" x 1/8"  
1-1/2" x 1/4"  
2" x 1/8"  
2" x 1/4"  
2-1/2" x 1/4"  
3" x 1/4"  
3/4" x 3/16"  
1-1/4" Fluted tube  
1-1/4" x 3/16"  
1-3/8" x 3/16"  
1-3/4" x 1/8"  
1-3/4" x 1/4"  
2-3/4" x 1/4"  
2-3/4" x 3/8"  
3" x 1/8"  
3-1/2" x .140"  
3-1/2" x 1/2"  
4" x 1/8"  
4" x 1/4"  
5" x 1/8"  
5" x 1/4"  
6" x 1/8"  
6" x .156"  
6" x 1/4"  
8" x 3/16"  
10" x 3/16"

### EXTREN® Rectangular Tube

4" x 1/8" x 2" x 1/4"  
2-1/2" x 1-5/8" x 1/8"  
3-1/4" x 2-1/2" x .160"  
6-1/2" x 1/4" x 2" x 1/2"  
7" x 4" x 1/4"  
9" x 6" x 5/16"

### EXTREN® Square Tube

1" x 1/8"  
1-1/2" x 1/8"  
2" x 1/8"  
2" x 1/4"  
3" x 1/4"  
4" x 1/4"  
1-1/4" x 1/8"  
1-1/2" x 1/4"  
1-3/4" x 1/8\*\*  
1-3/4" x 1/4\*\*  
2-1/2" x 1/4"  
3" x 1/8"  
3" x 3/8"  
3-1/2" x 1/4"  
4" x 3/8"  
6" x 3/8"

### Square Bar - Thermal Cure Light Gray/Green

1/2"  
5/8"  
3/4"  
1"  
1-1/4"  
1-1/2"

### Rod - Thermal Cure Light Gray/Green

1/4"  
3/8"  
1/2"  
5/8"  
3/4"  
13/16"  
7/8"  
1"  
1-1/8"  
1-1/4"  
1-1/2"  
1-7/8"  
2"

READILY AVAILABLE  SPECIAL ORDER

\* 1-3/4" x 1/8" and 1-3/4" x 1/4" Square Tubes are undersized to allow telescoping.  
\*\* USDA approved plate available (special order) in all sizes except 1/4" and 3/8".  
**NOTE:** Unless otherwise noted, all dimensions are in inches and stocked lengths are 10' and 20' long. All EXTREN® Series 500 products can be produced to meet NSF potable water standards in minimum mill run quantities. Only products bearing NSF logo are certified.

ISO 9001:2000 Certified

1-800-237-3820

Worldwide Service



# McNICHOLS CO.

www.mcnichols.com

e-mail: sales@mcnichols.com

